









**AFFORDABLE, HIGH-RESOLUTION THERMAL IMAGING WITH SEEKFUSION™ TECHNOLOGY**

**KEY CAMERA SPECS**

-  320 x 240 Thermal Sensor
-  57° Field of View
-  -40 to 626F Temperature Measurement
-  SeekFusion™ Thermal + Visible
-  Large Color Touch Screen
-  Works Day & Night



[thermal.com](http://thermal.com)



Seek ShotPRO is the most advanced thermal imaging camera for building professionals. Snap photo and video and analyze immediately with new on-board thermography tools. Add spot measurements and temperature boxes to create time-saving reports on the spot. Precisely diagnose problems with 16x higher resolution than comparably priced cameras. Take full control of photos and video by adjusting the blend between visible and thermal images. Share and stream to any smartphone or tablet over WiFi. Mount to a tripod and live stream to colleagues to tackle tougher jobs in the challenging environments. Seek ShotPRO puts durable and sleek thermal imaging expertise in your pocket.

Designed and Manufactured in Santa Barbara, California with Global Components.

<b>Product Name:</b>	Seek ShotPRO
<b>Product Type:</b>	Thermal Imaging Camera
<b>Seek ShotPRO UPC &amp; PN</b>	UPC: 00859356006217 Part Number: SQ-AAA

Single Unit	
<b>Included in the box:</b>	<ul style="list-style-type: none"> <li>• Seek ShotPRO</li> <li>• Wrist Lanyard</li> <li>• Welcome Guide</li> <li>• USB Cable</li> </ul>
<b>Device Dimensions (H x W x D)</b>	8 x 14 x 2.8 cm 3.125 x 5.5 x 1.1 inches
<b>Device Weight:</b>	7.2 ounces 205 grams
<b>Box Dimensions (H x W x D)</b>	18 x 12 x 4.5 cm 7 x 4.75 x 1.75 inches
<b>Box Weight:</b>	14.5 ounces 410 grams



**On-Device Analysis**

Capture, edit and analyze photos in the field – all from your device.



**SeekFusion™**

Find problems faster with adjustable blend of visible and thermal images.



**More Pixels, More Precision**

Sixteen times more resolution than the competition. Best in class thermal resolution.



**WiFi Streaming**

Stream live video to any mobile device for collaboration and fixed monitoring.

**KEY FEATURES**

**320 x 240 Best in Class Thermal Resolution**

Identify, diagnose and report problems faster with high resolution thermal images and video

**SeekFusion™ Technology**

See exactly what you're looking at with combined visible and thermal images

**Large Color Touch Screen**

3.5" color touchscreen with 640x480 resolution so you can see more detail

**WiFi Live View**

Stream a live thermal view onto your smartphone or tablet over WiFi

**Long-Lasting Battery Life**

Best-in-class battery life of up to 4 hours continuous thermal imaging

**Durable, Pocket-Sized Housing**

Built with a rugged, IP54 rating

**BENEFITS & USES**

**Easy-to-Use Interface**

Diagnose problems on-the-spot and analyzes images on your device

**Inspect Electrical Panels, Connections, and Fuses**

Find electrical faults faster and with more confidence

**Check Ventilation Systems for Proper Installation**

Ensure grilles, registers, and diffusers are sealed for maximum efficiency

**Spot Duct Leaks Invisible to the Human Eye**

Easily scan a large ducting network to reveal the air leaks

**Identify Inefficient Air Handlers**

Diagnose faulty equipment and improve energy efficiency

**Find Missing Insulation**

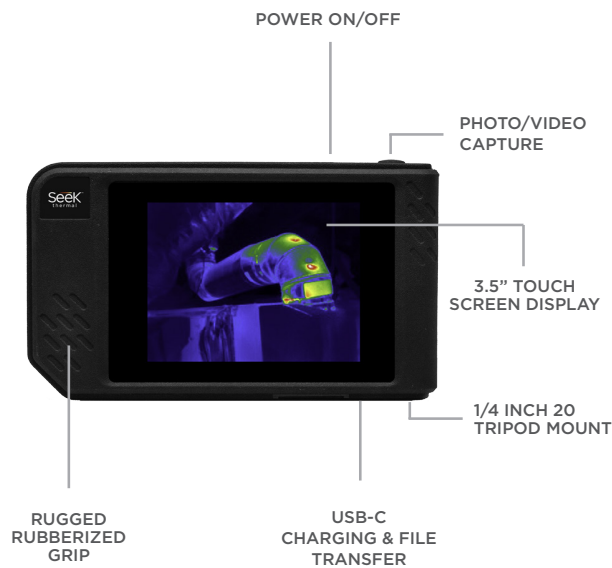
Easily find missing or poor-performing insulation in seconds

## TECHNICAL SUMMARY

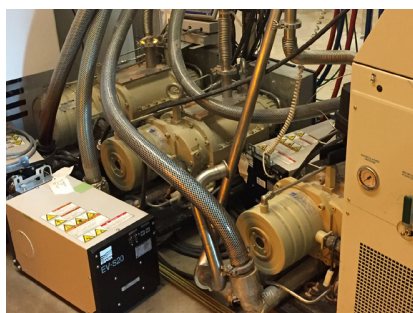
SPECIFICATIONS	DESCRIPTION
Thermal Sensor	320 x 240 (76,800 pixels)
SeekFusion™	Yes
Field of View	57 Degree FOV
Temperature Range	-40°F to 626°F (-40°C to 330°C)
Frame Rate	< 9 Hz
Focus	Fixed Focus
Light/Flash	Yes
Display	3.5" Color Display (648 x 480 Resolution)
Microbolometer	Vanadium Oxide
Thermal Sensitivity	< 70 mK
Spectral Range	7.5 - 14 Microns
User Interface	Intuitive Touch Screen
Temp. Display Scale	Fahrenheit, Celsius or Kelvin
Color Palettes	White, Black, Tyrian, Spectra, Iron, Prism, Amber & Hi
Storage Media	4GB Internal Storage
Battery	Up to 4 Hours Thermal Imaging
WiFi	WiFi enabled. Connect & stream via SeekView app

For support and user guides visit [support.thermal.com](http://support.thermal.com)

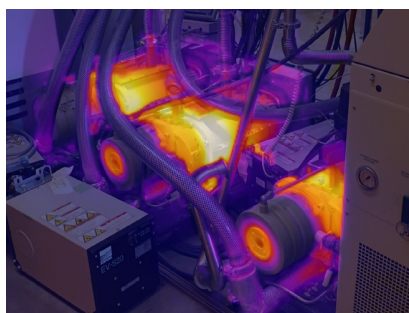
## OVERVIEW



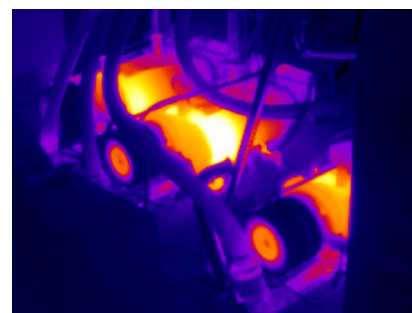
## SEEKFUSION™



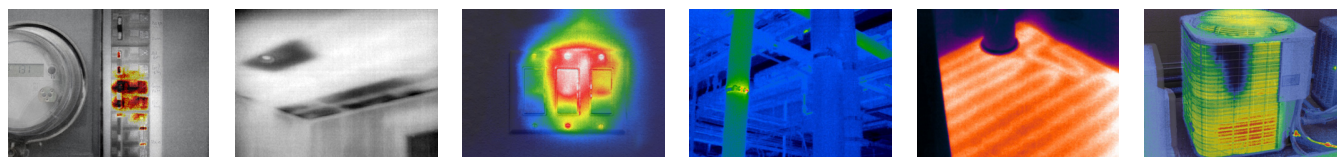
VISIBLE IMAGE



SEEKFUSION™ IMAGE



THERMAL IMAGE



## Seek more at [thermal.com](http://thermal.com)

6300 Hollister Ave, Santa Barbara, CA 93117 USA

Seek Thermal engineers, designs and manufactures high quality thermal imaging products and core platforms for consumer, commercial, and heat sensing IoT data applications. With headquarters in Santa Barbara, California, the global hub of thermal imaging innovation, the company has developed breakthrough thermal imaging camera cores that will enable a range of affordable products for use at home, work and play. For more information visit [thermal.com](http://thermal.com) and follow #seekthermal on Instagram and @seekthermal on Twitter.